

Agilent E5071CU Option 028 Hard Disk Drive Kit

User's Guide

First Edition



Manufacturing No. E5071-90133

August 2011

Notices

The information contained in this document is subject to change without notice.

This document contains proprietary information that is protected by copyright. All rights are reserved. No part of this document may be photocopied, reproduced, or translated to another language without the prior written consent of the Agilent Technologies.

© Copyright 2011 Agilent Technologies

Manual Printing History

The manual's printing date and part number indicate its current edition. The printing date changes when a new edition is printed. (Minor corrections and updates that are incorporated at reprint do not cause the date to change.) The manual part number changes when extensive technical changes are incorporated.

August 2011 First Edition

Typeface Conventions

Sample (bold)	Boldface type is used when a term is defined or emphasis.
<i>Sample</i> (Italic)	Italic type is used for emphasis.
Sample key	Indicates a hardkey (key on the front panel or external keyboard) labeled "Sample." "key" may be omitted.
Sample menu/button/box	Indicates a menu/button/box on the screen labeled "Sample" which can be selected/executed by clicking. "menu," "button," or "box" may be omitted.
Sample block/toolbar	Indicates a block (group of hardkeys) or a toolbar (setup toolbar) labeled "Sample."
Sample 1 - Sample 2 - Sample 3	Indicates a sequential operation of Sample 1 , Sample 2 , and Sample 3 (menu, button, or box). "-" may be omitted.

1 **General Information**

This chapter describes the Hard Disk Drive Kit, contents of the kit, and required tools to install the Option 028 into the Agilent E5071C.

Option 028 Hard Disk Drive Kit

The purpose of this kit is to install the option 028 into the Agilent E5071C.

Contents of the Agilent E5071CU Option 028 Upgrade Kit

The kit includes the parts listed in Table 1-1. If anything is missing, contact the nearest Agilent Technologies office.

Table 1-1 **Contents of the Agilent E5071CU Option 028 Upgrade Kit**

Description	Qty.
Upgrade Manual (This manual)	1
Hard Disk for E5071C	1

2 **Option Installation**

This chapter describes the procedure to install the Option 028 into the Agilent E5071C.

Introduction

This chapter describes the procedure to install Option 028 into the E5071C. The procedure consists of the following items.

- Installation Requirement
- Backing Up Option Data
- Removal Procedure
- Replacement Procedure
- Restoring Option Data
- Writing System Correction Data of Backup Memory to Removable HDD
- Reconfiguring Touch Panel Settings
- Calibration of the Touch Screen

Update Procedure for Hard Disk

This procedure is for screw type hard disk.

Installation Requirement

- 5188-4426 Key for Hard Disk Carrier

Backing Up Option Data

- Step 1.** Copy RECOVERY(E):\LICENSE\gen.lic from the original HDD to USB pen drive.

NOTE

The license keys are kept in a text file (.lic) located at RECOVERY(E):\LICENSE\gen.lic. When you change the removal hard disk, copy the file as back up. Even if you lost the file, you can activate the option again if you have the license number. You can re-create the license number at <http://www.agilent.com/find/softwarelicense> with your software entitlement certificate..

Removal Procedure

- Step 1.** Turn off the power.
- Step 2.** Inset the key in the lock and turn anti-clockwise.
- Step 3.** Open the screw in clockwise direction.
- Step 4.** Press the button under the screw.
- Step 5.** Remove the hard disk.

Replacement Procedure

- Step 1.** Insert the hard disk into the slot.
- Step 2.** Turn the screw in anti-clockwise direction until it is locked..
- Step 3.** Turn the key to the right until it is locked.
- Step 4.** Remove the key.
- Step 5.** Turn on the E5071C.

Restoring Option Data

- Step 1.** Paste the gen.lic file to RECOVERY(E):\LICENSE\ on Spare-HDD from the USB pen drive.

Writing System Correction Data of Backup Memory to Removable HDD

The following is a description of the procedures to write the system correction data stored in the backup memory to the mounted removable HDD.

Step 1. Turn on the E5071C.

CAUTION The function for Factory image making window is only displayed when E5071C is turned on for the first time.

Step 2. Press

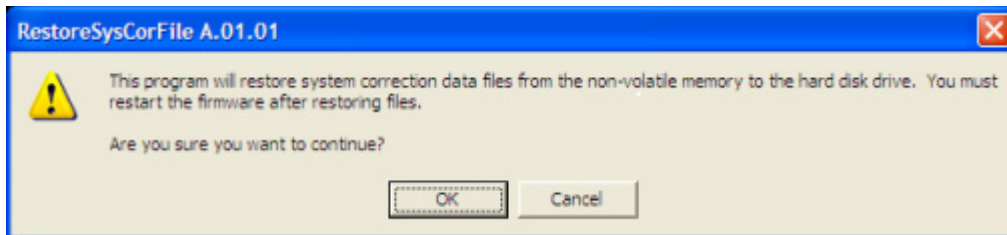
Step 3. Press **Load Project...** on the softkey menu.

Step 4. A dialog box appears to allow you to select a program to be loaded. Select RestoreSysCorFile.vba from the D:\Agilent\Service folder, and then press **Open** button.

Step 5. Press

Step 6. RestoreSysCorFile dialog box appears (Figure 2-1). Click **OK**.

Figure 2-1 RestoreSysCorFile Dialog Box



CAUTION Once the program has ended, restart the E5071C to enable the system correction data.

CAUTION If touch screen does not work after the installation, refer to "Reconfiguring Touch Panel Settings".

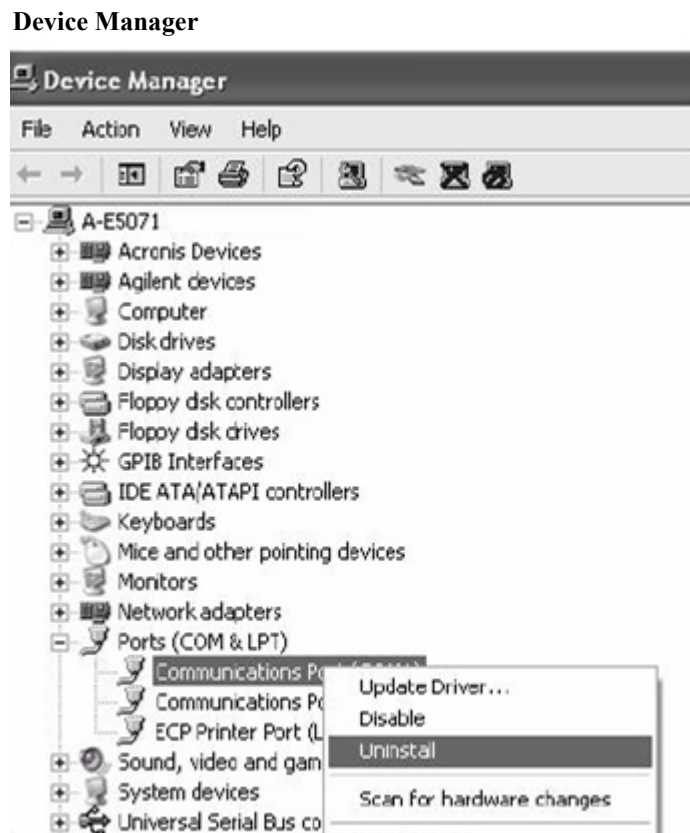
Step 7. Calibrate the touch screen by referring to Calibration of the Touch Screen.

Reconfiguring Touch Panel Settings

The following is a description of the procedures to reconfigure touch panel settings.

- Step 1.** In E5071C, right click My Computer..
- Step 2.** Select Properties. The System Properties dialog appears
- Step 3.** Select Hardware tab.
- Step 4.** Click Device Manager.
- Step 5.** Select Ports (COM & LPT).
- Step 6.** Check if two Communication Port (COM1) are displayed.
- Step 7.** Right click and select Uninstall (Figure 2-2) for both the COM1 ports.

Figure 2-2



- Step 8.** The Confirm Device Removal message appears. Click OK.
- Step 9.** Reboot the instruments.

Calibration of the Touch Screen

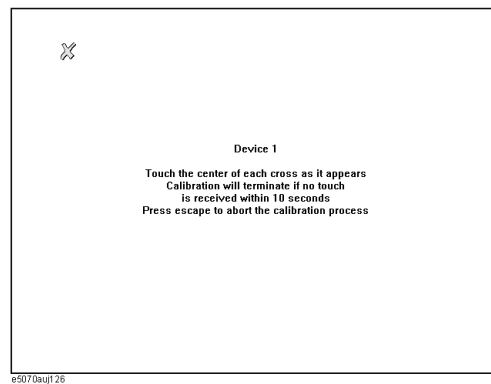
When you have replaced the HDD on an E5071C, you have to calibrate the touch screen. Follow the procedure described below to calibrate the touch screen.

- Step 1.** Press **System**.
- Step 2.** Press **Service Menu**.
- Step 3.** Press **Test Menu**.
- Step 4.** Press **Adjust Touch Screen**.

The touch screen calibration screen (Figure 2-3) appears.

Figure 2-3

Touch Panel Calibration Screen



- Step 5.** Touch the x mark on the upper left with your finger. The mark x appears also on the lower left, upper right, and lower right. Touch the x marks in that order with your finger.

Touching the four locations described above with your finger automatically concludes the touch screen calibration.

NOTE

With no operation on the touch screen calibration screen for a preset time, it automatically closes and the previous measurement screen reappears.

www.agilent.com

© Agilent Technologies, Inc. 2011

Printed in Malaysia
First edition, August 2011



E5071-90133